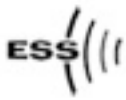


The ESS, Inc.
Fast Track 2+2®
1000 Series EPROM Replacement Manual



A Step-by-Step Illustrated Guide

© 2007 ESS, Inc.

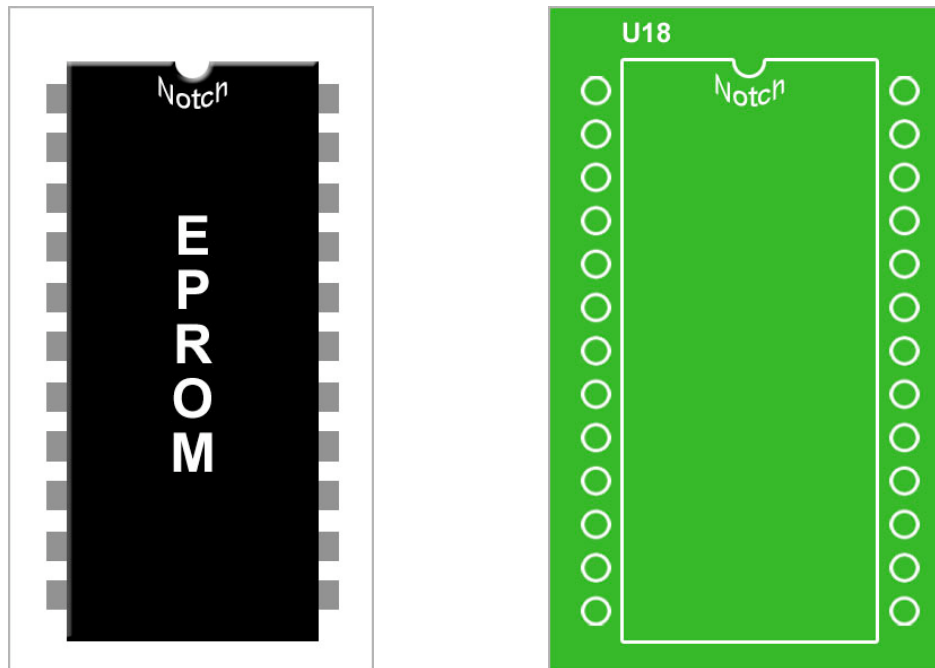


Fast Track 1000 EPROM Replacement Notes

ESS, Inc. -- 615-259-3671

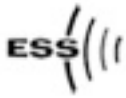
There are a few things to remember when you replace the EPROM (U18) in the Fast Track 1000 Series timer.

VERY IMPORTANT -- The EPROM must be inserted into the IC socket in the correct orientation . Failure to do so will cause the Timer not to function at best and can fry the EPROM at worst.



As seen in the drawing on the Left the EPROM has a small notch in the Top. You will also find a similar notch in the white silkscreen on the PCB (the drawing on the Right) at the U18 location. This indicates the correct orientation for the EPROM.

It takes patience and a bit of finesse to insert an IC into a socket without bending or breaking any of the pins but it's imperative for the correct operation of the circuit.



Fast Track 1000 EPROM Replacement Notes

ESS, Inc. -- 615-259-3671

NOTE -- After you replace the EPROM you MUST dump the memory by placing a piece of paper or business card under the battery clip for a minute while power is OFF. Then take it out and power ON.

Now you will need to confirm the model and serial number of the EPROM with a printout.

- Make sure there is paper loaded in the printer
- Press MAIN MENU
- Press the Up Arrow 5 times to the top line TIME/DATE
- Press ENTER

The printer should print out a line of data similar to this:

```
3:35 PM MON JAN 2  
POWER ON RESET  
HRD255 04/02/99  
11937  
SINGLE LANE  
FULL-LINE 1 WINDOW  
MONTHLY  
HYUNDAI LCD  
RS NO
```

The text in **Bold** should be the same as on the sticker affixed to the face of the EPROM. This is the specific store program data, in this case Hardee's (**HRD255**) and the Timer's Serial Number (**11937**).

Call Us with any questions.

ESS, Inc.
109 17th Ave. S.
Nashville, TN 37203
615-259-3671